



# Hong Kong Senlian Electronics Co. LTD.





01

## Company Profile

- About Us
- Milestones
- Vision and Mission
- Global Coverage

02

## Manufacturing Excellence

- Process Overview
- Equipment Showcase
- Product Cycle
- Partners

03

## Success Stories

- Industry Coverage
- Portfolio

04

## Long - Term Vision

- Key Benefits
- Customer Base

# CONTENT

Advancing  
Through  
Cutting-Edge  
Technology



Your Reliable Through-Hole PCB R&D Partner  
Over 12 Years of Proven Expertise

# OUR STORY



A blue circular graphic containing the year '2013' in white text.

2013

# About Our Company

Founded in 2013 Hong Kong Senlian Electronics has rapidly evolved into a technology - driven PCB manufacturer committed to innovation and precision.

Through continuous investment in automation, IoT, and intelligent monitoring systems, Hong Kong Senlian Electronics has transformed traditional manufacturing into a fully digitalized, data-driven ecosystem.

As a next-generation smart factory, Senlian delivers superior quality, consistency, and efficiency through advanced automation - redefining standards for intelligent PCB production.

# Company Milestones

2013



## Establishment

Establishment of Senlian Technology, a modern facility strategically located in China's silicon valley. Equipped with advanced automated lines, and strict quality control, achieving a capacity of 30,000 m<sup>2</sup>/mo.

2018



## First Major Investment

First strategic investment set the foundation for large-scale intelligent manufacturing - delivering 150,000 m<sup>2</sup> of Through-Hole Boards monthly and redefining production efficiency.

2022



## Expansion

Invested in process integration and automation, ensuring smoother and more efficient mass production.

# Company Milestones

2023



## Rapid Growth

As part of global expansion strategy, offices in Taiwan and Southeast Asia were established to strengthen overseas partnerships and enhance regional service. At the same time, laid the foundation for a new factory.

2024



## New Chapter

Established a new factory to bring our intelligent manufacturing vision to life, boosting production capacity to 100,000 m<sup>2</sup>/month for Through-Hole boards.



## Investment ROI

The investment in automated equipment not only enhances efficiency but also improves quality reliability and shortens production cycles, thereby continuously creating value for our valued customers.



## Investment

Achieved film-free operations throughout the entire process, thanks to industry-leading intelligent equipment including fully automated pattern plating line, VCP, automatic laminating machine, automatic board handling system, robotic arms.



# Vision and Mission



**Innovation**

To be the world's leading intelligent PCB manufacturer, setting new standards in precision, automation, and innovation across global industries.

Resolving customer challenges, delivering superior PCB solutions, and continuously pursuing excellence through innovation.



**Excellence**

**12+**

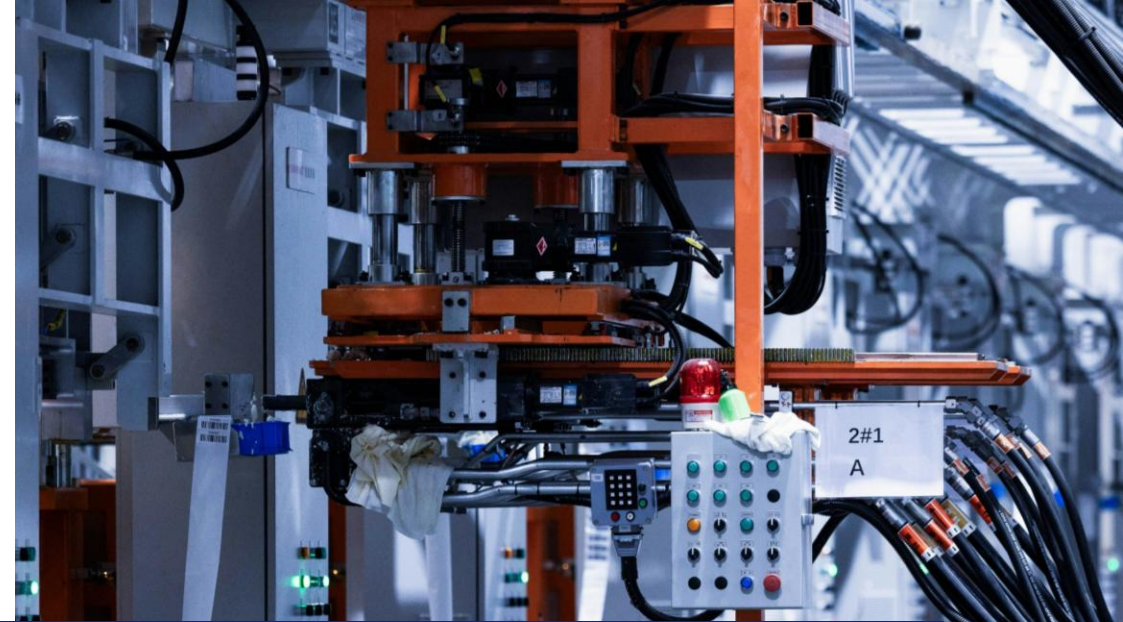
Extensive Experience

**14 D**

Average Production Cycle

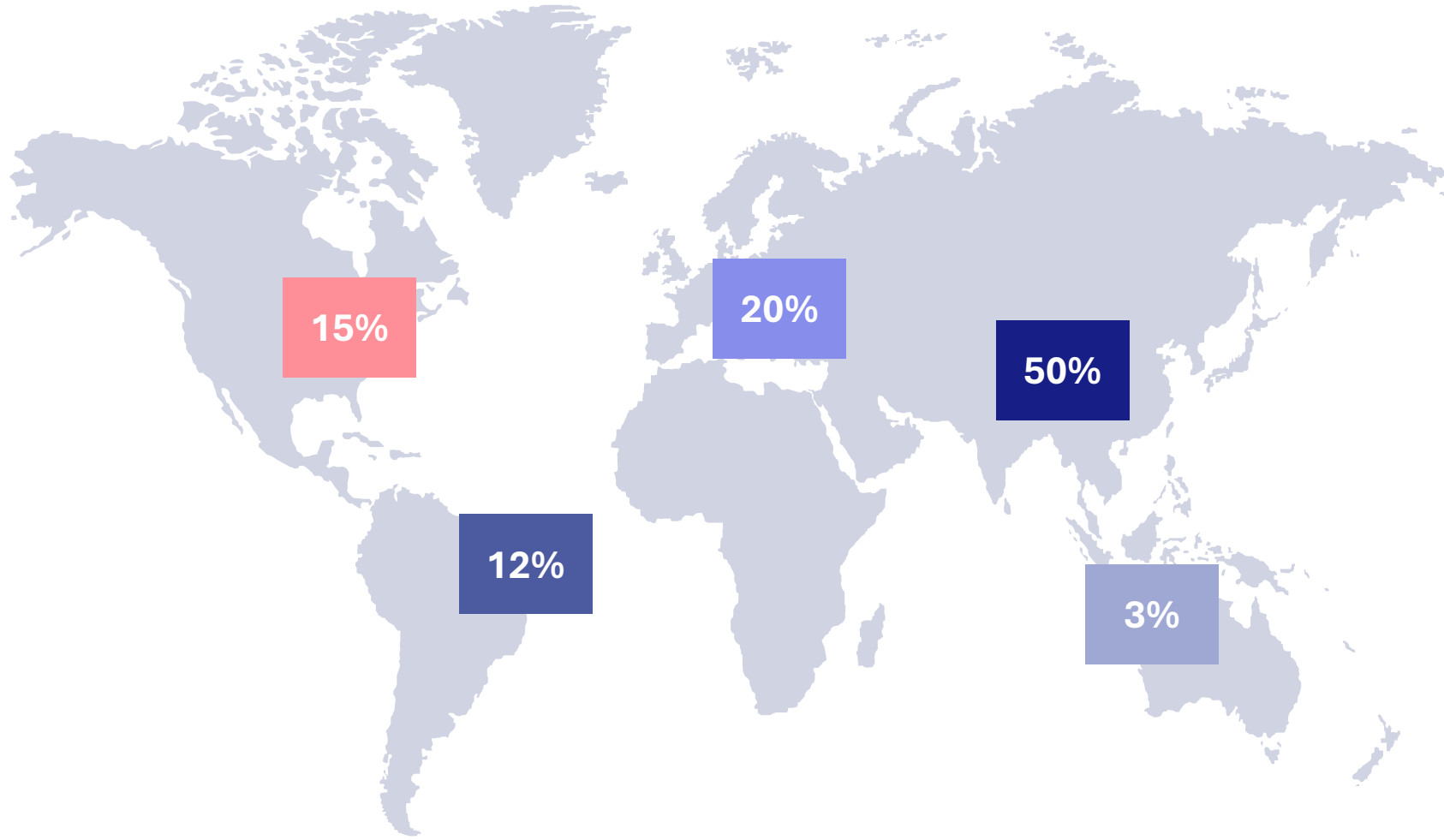
**5**

Fully Automated Production Line





# International Map



**\$ 80m+**  
**Global**  
**Revenue**



With premium products and flexible delivery solutions, Senlian has earned industry recognition, becoming the trusted supplier for numerous world-renowned enterprises.

# MANUFACTURING EXCELLENCE





# 6S Manufacturing System

## Design Review (DQE)

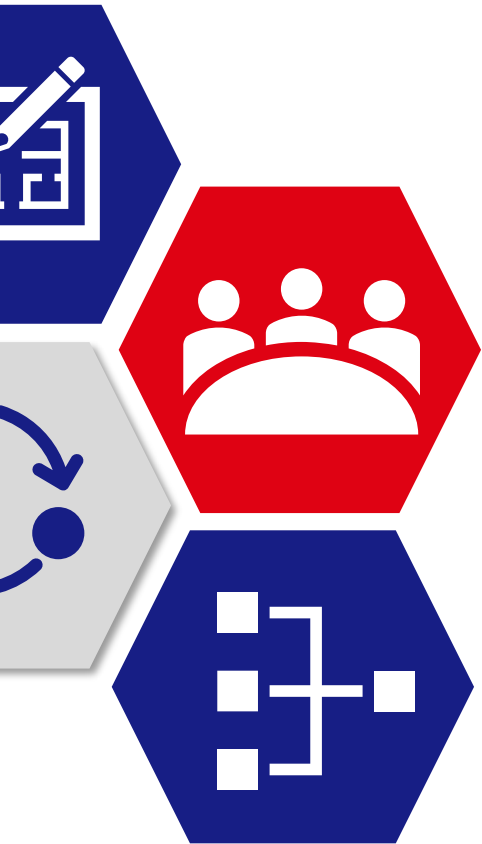
Customer requirements are analyzed and translated into engineering standards. Our design engineers ensure manufacturability, quality targets, and performance reliability are clearly defined before production begins.

## Procurement Control (PUR)

Suppliers are carefully evaluated, and materials are verified through strict incoming checks. Every component is traceable and compliant with standards, securing stable quality from the source.

## Production Quality Control (IQC, IPQC, OQC)

Quality inspections are embedded into the entire production flow. From incoming materials to in-process monitoring and final output, automated inspection systems ensure consistency and zero-defect delivery.





# 6S Manufacturing System

## Process Quality Engineering (PQE)

PQE identifies process deviations, analyzes data trends, and drives corrective and preventive measures. By optimizing process capability and yield, it ensures each production step achieves sustained quality improvement.

## Supplier Quality Evaluation (SQE)

Supplier performance is continuously assessed to maintain reliable sourcing. Through audits, feedback, and improvement programs, we build long-term partnerships that enhance supply chain stability.

## Quality Assurance (QA)

Feedback and complaints are analyzed systematically to identify root causes. Corrective actions and process refinements are implemented, turning customer insights into measurable product improvement.





# The Process Behind Quality Management



**15%**  
Production  
Cost Decrease

## Design Quality Management (NPI Quality)

Innovation begins with precision engineering. Our PCBs undergo DFMEA, design rule checks, CTQ/CTP planning, and reliability testing to ensure flawless performance from day one.



## Supplier Management

Trusted partners deliver exceptional materials. We ensure supplier excellence through AVL management, IQC inspections, PPAP approvals, and SRM audits to guarantee top-quality components.



## In-Process Quality

Quality is built into every step of production. Using AOI, 4-wire low resistance testing, SPC, IPQC, MSA, and CAR, we detect and resolve defects in real time.



## Quality Assurance

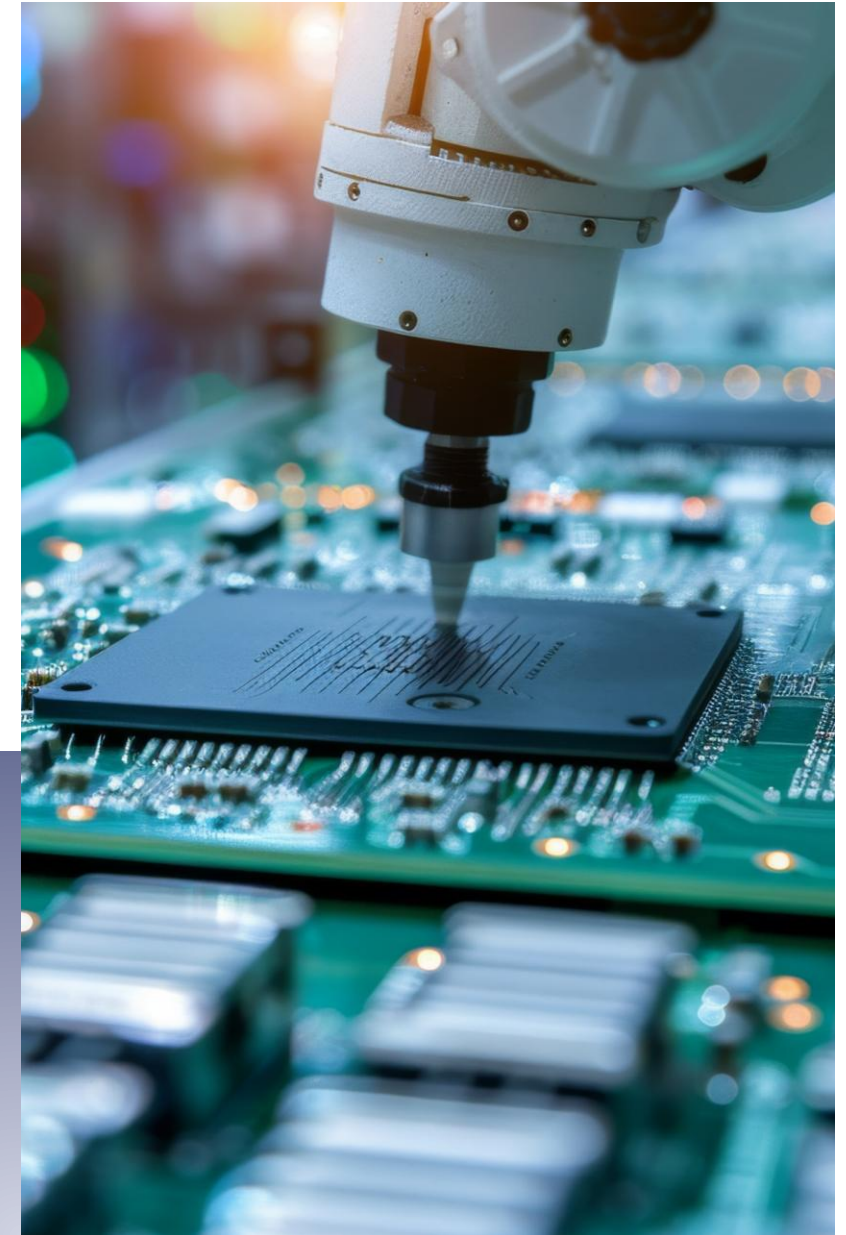
Excellence you can trace and rely on. Through barcode/QR traceability, MES/SAP monitoring, OQC/AVI inspections, 8D & QRQC problem-solving, and TQM/QFD, we deliver consistent, reliable PCBs.



# Advancing Through Cutting – Edge **Revolution**

With cutting-edge equipment and **advanced testing** systems, we deliver unmatched precision and dependable performance in every product.

Over **\$60 m** invested in full suite  
**Automated Production** equipment





# Equipment Showcase



▶ **CNC Drilling**



▶ **Dry Film Laminating**



▶ **Dry Film LDI Exposure Line**



▶ **Vertical Continuous Plating Machine**



▶ **Auto Pattern Plating**



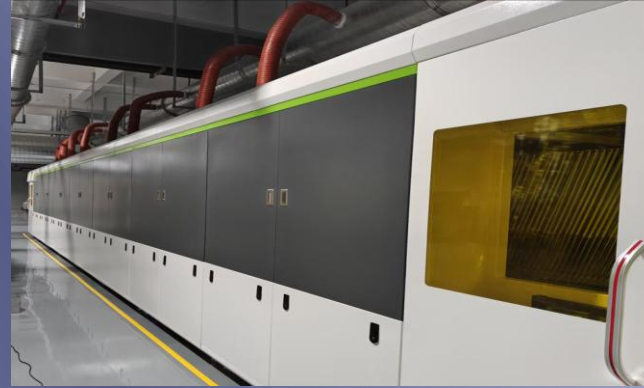
▶ **On line AOI**



# Equipment Showcase



▶ Solder Mask Oil Auto Printing Line



▶ Low Temp. Tunnel Baking Line



▶ SM LDI Exposure



▶ Dual-Silkscreen Printing Line



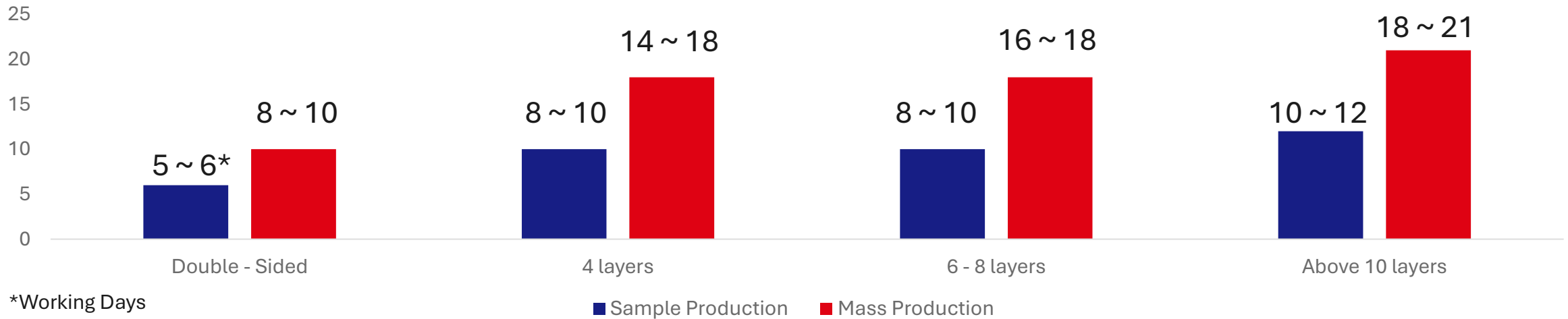
▶ Electric Testing



▶ CNC Routing



# Production Capability & Lead Time



**500+** Professionals

**1** Goal

Precision without compromise

Advanced automation and streamlined production flow enable us to meet diverse customer needs - from rapid prototyping to full-scale manufacturing - while maintaining consistent quality across every layer count.

Delivery timelines are **optimized for quality assurance and process stability**, ensuring every board meets exact specifications and performance standards.

Flexible scheduling, advanced equipment, and strict process control, Senlian provides customers with **dependable delivery and trusted manufacturing excellence.**



# Our Strategic Business Partners

## Printing Plates

KB



生益科技  
SYTECH

GDM 金安国纪

 NOUYA

## Printing Ink



## Dry Film

FORST

 DUPONT™

A large, light blue, stylized number '3' graphic is positioned on the left side of the slide, partially overlapping the dark blue background.

# SUCCESS STORIES



# PROJECTS THAT MADE AN IMPACT

Behind every board we produce lies a story of collaboration, innovation, and dedication - delivering reliable performance that drives industries forward.





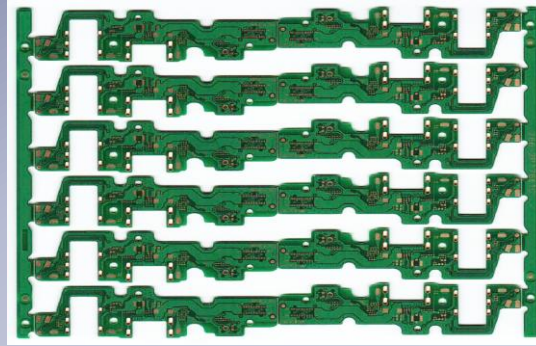
**Layers: 4L (OSP)**

Min. Hole Diameter: 0.30mm

Min. Line width/Line spacing: 3/4 mil

Minimum pad size: 0.25\*0.25mm

Application: Security

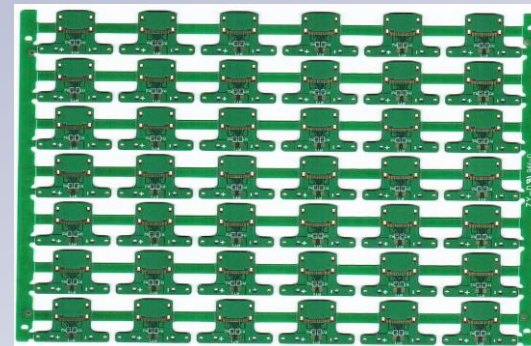


**Layers: 4L (ENIG)**

Min. Hole Diameter: 0.30mm

Min. Line width/Line spacing: 4/4mil

Application: Mobile Phone Sub-Board

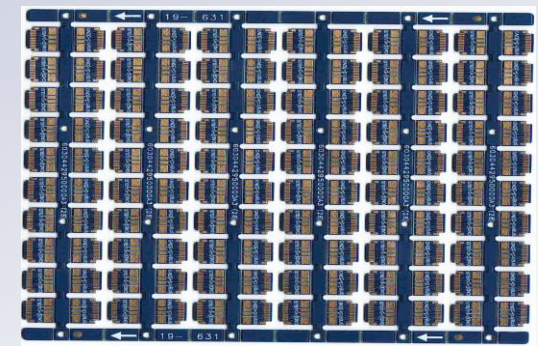


**Layers: 4L (ENIG)**

Min. Hole Diameter: 0.30mm

Min. Line width/Line spacing: 3.9/4mil

Application: Port Panel



**Layers: 2L (ENIG)**

Min. Hole Diameter: 0.25mm

Min. Line width/Line spacing: 3/4 mil

Application: Type-C Port Panel



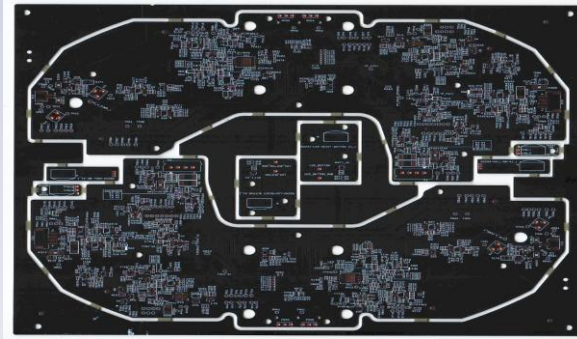
**Layers: 2L (SAC)**

Min. Hole Diameter: 0.3mm

Min. Line width/Line spacing: 4/4mil

Special proces: Rim tolerance +/-0.05mm

Application: Smart Lock

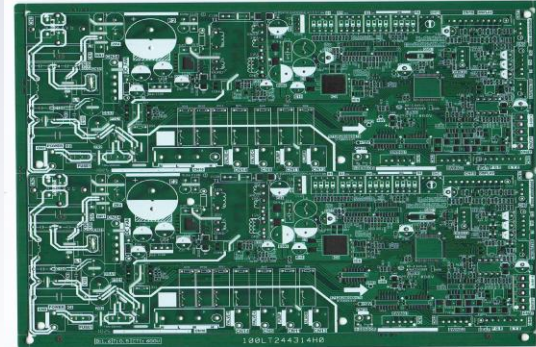


**Layers: 4L (SAC)**

Min. Hole Diameter: 0.3mm

Min. Line width/Line spacing: 4/4mil

Application: Smart Home (Robotics)

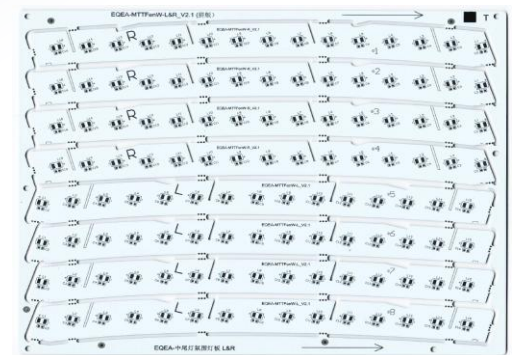


**Layers: 2L (SAC)**

Min. Hole Diameter: 0.3mm

Min. Line width/Line spacing: 4/4 mil

Application: Home AC Board



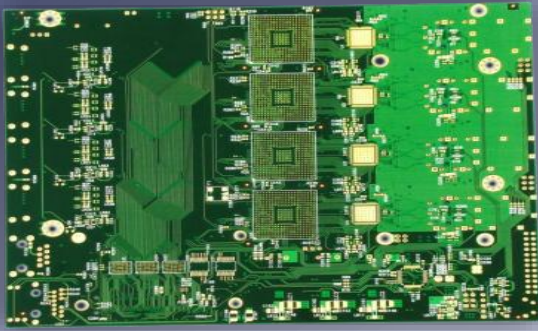
**Layers: 2L (SAC)**

Min. Hole Diameter: 0.3mm

Min. Line width/Line spacing: 5/5mil

Special process: 2OZ

Application: Automotive Rear Taillight



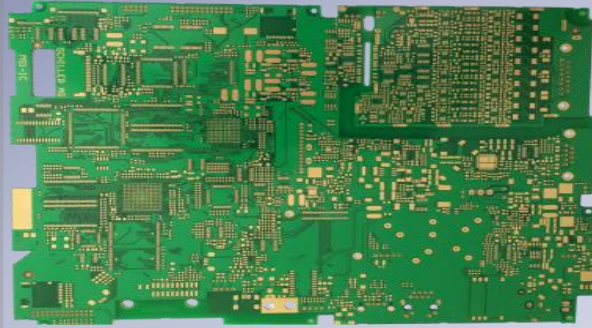
**Layers: 12L**

Min. Hole Diameter: 0.25mm

Min. Line width/Line spacing: 3/3mil

Special process: Impedance Testing

Application: Security



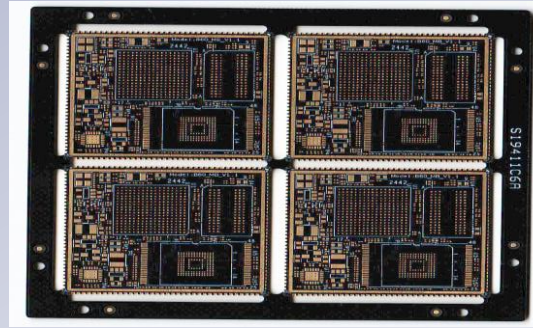
**Layers: 4L**

Min. Hole Diameter: 0.20mm

Min. Line width/Line spacing: 3.5/3.5mil

Special process: Impedance Testing

Application: Telecommunication



**Layers: 6L**

Min. Hole Diameter: 0.2mm

Min. Line width/Line spacing: 3.5/4mil

Special process: Impedance Control Half-Hole Module Board

Application: 通信



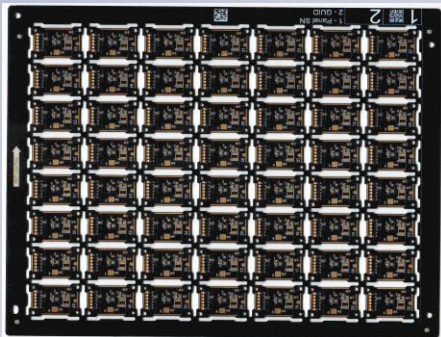
**Layers: 6L**

Min. Hole Diameter: 0.40mm

Min. Line width/Line spacing: 4/4 mil

Special process: Ion Cleanliness Control

Application: Automotive Electronics

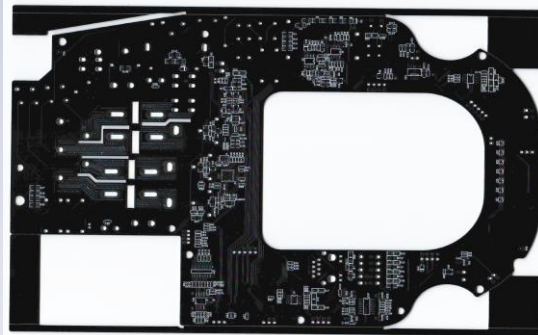


**Layers: 4L**

Min. Hole Diameter: 0.3mm Min. Line width/Line spacing: 5/5mil

Special process: Edge Plating

Application: Performance Control



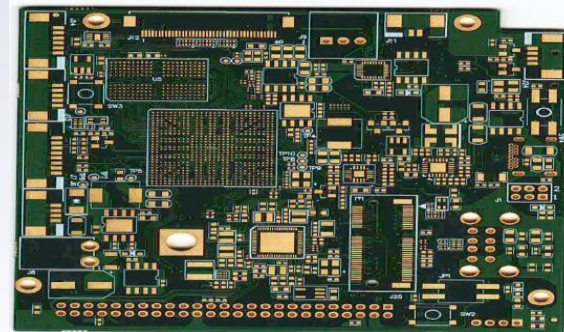
**Layers: 8L**

Min. Hole Diameter: 0.3mm

Min. Line width/Line spacing: 8/8mil

Special process: 3OZ Thick Copper Plate

Application: Automotive Power Supply Board



**Layers: 8L**

Min. Hole Diameter: 0.20mm

Min. Line width/Line spacing: 3/3.5mil

Special process: Resin Plug Hole

Application: Industrial Control



**Layers: 8L**

Min. Hole Diameter: 0.25mm

Min. Line width/Line spacing: 4/4mil

Special process: Resin Plug Hole

Application: Industrial Control



# Shaping **Tomorrow's** Industries

Driven by advanced manufacturing and engineering expertise, we deliver reliable PCB solutions that power the technologies of today, and shape the industries of tomorrow. **Hong Kong Senlian Electronics Co. LTD.** through continuous innovation and collaboration is committed to building a smarter, safer, and more sustainable future.



**Automotive**  
**15%**  
**Telematics Boxes**  
**Smart Central Control Systems**  
**Smart Cockpits**

**Security and Industrial Control**  
**25%**  
**Smart Buildings**  
**Industrial Control Equipment**  
**Robotic Arms**

**Consumer Electronics**  
**35%**  
**Routers**  
**Motherboards**  
**Bluetooth Modules**

**Renewable Energy**  
**25%**  
**Photovoltaic Inverters**  
**Energy Storage Systems**  
**Wind Power Converters**



# Customer Base

Consumer  
Electronics

TOPBAND 拓邦

NOVO

D&D<sup>®</sup>

TCL

Energy & Power  
Supply

UDAN 光旦

EVE<sup>®</sup>



SINOTRUK

power-one<sup>®</sup>  
Renewable Energy Solutions

Communication

ARRIS

Lenovo<sup>™</sup>



Celestica<sup>™</sup>

LITEON<sup>®</sup>

COMMSCOPE<sup>®</sup>

Security & Industrial  
Control

SOARTEK  
正嘉翔科技

HSAE 航盛  
Hangsheng Technology GmbH

intelbras

JABIL

# LONG – TERM VISION





**200,000 m<sup>2</sup>**

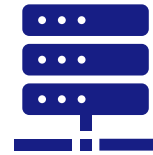
Monthly Production Output of Through Hole PCB

**50,000 m<sup>2</sup>**

Monthly Production Output of HDI

# SMART FACTORY 4.0

Upon reaching full production capacity, Hong Kong Senlian Electronics Co. LTD is projected to rank among the **Top 50** PCB manufacturers in **China's Printed Circuit Association**.



## IoT, AI

Integrated digital technologies and big data to enable real-time monitoring, analysis and optimization.



## Automation

Powered by smart logistics, ensuring every material is delivered to the right place, at the right time, every time.



## Intelligence

Using smart factory systems, we track, analyze, and optimize production data for better efficiency and decision-making.



## Innovation

Dedicated R&D teams drive continuous technological advancement, ensuring our core products remain at the forefront of the industry.



## Automation

Highly automated production lines enable precision, efficiency, and minimal human error throughout the manufacturing process.



# 6

# Benefits Company



## Quality

Our stable quality ensures every PCB delivers consistent and reliable performance across all production batches.



## Delivery

With a focus on on-time delivery, we guarantee products reach customers exactly when promised, keeping projects on schedule.



## Cost

Leveraging cost advantages, we provide high-quality PCBs efficiently and competitively, maximizing value for our customers.



# Contact Us

Name Surname

Position



+86 123 456 789



[www.senlianelec.com](http://www.senlianelec.com)



[Name.surname@senlianelec.com](mailto:Name.surname@senlianelec.com)



**Thank You for  
Your **Attention****

